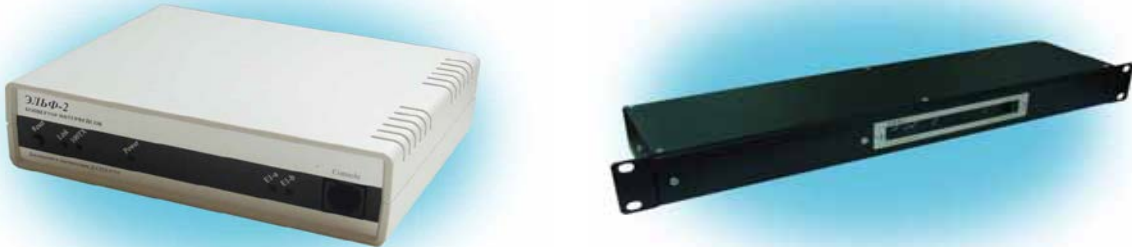


ELF2-AE - external E1 interface for Asterisk



External interface ELF2-AE represents a device designed to input/output of the E1 synchronous streams via the TDMoX protocol into IP ATC Asterisk. Together with Asterisk, the interface provides functionality of PBX, IP PBX, E1 cross-connect and data transfer via E1 and many other things. ELF2-AE is physically connected to the Asterisk server via the Ethernet interface. The TDMoX protocol implemented in the device is optimized for high latencies in the network. So, in the enlarged buffer mode, ELF2 allows start of the Asterisk server in virtual environment - under the control of KVM, ESXi, XEN and others. The device serves up to 4 E1 ports with the optional bypass mode between ports.

Key Features

- master-slave modes relative to E1, master-slave relative to Asterisk
- support for main telephony signaling - PRI, QSIG, SS7 and others
- enlarged buffer to support the virtualized servers
- hot swapping of interface, not stopping the server
- point-to-point mode, independently from the server
- auto bypass mode if the Asterisk server is inaccessible
- support in the standard DAHDI packages

Ordering information

Name	Options
ELF2-AE	1 E1 port, 1 Ethernet port, table-top
ELF2-AE-EC	1 E1 port, 1 Ethernet port, echo suppression, table-top
ELF2-AE-1U	1 E1 port, 1 Ethernet port, rack-mount
ELF2-AE-EC-1U	1 E1 port, 1 Ethernet port, echo suppression, rack-mount
ELF2-AE2-1U	2 E1 ports, 1 Ethernet port, rack-mount
ELF2-AE2-EC-1U	2 E1 ports, 1 Ethernet port, echo suppression, rack-mount

ELF2-AE2-EC-BP-1U	2 E1 ports, 1 Ethernet port, echo suppression, bypass, rack-mount
ELF2-AE4-1U	4 E1 ports, 2 Ethernet ports, rack-mount
ELF2-AE4-EC-1U	4 E1 ports, 2 Ethernet ports, echo suppression, rack-mount
ELF2-AE4-EC-BP-1U	4 E1 ports, 2 Ethernet ports, echo suppression, bypass, rack-mount

Technical Specifications

General	
Dimensions (table-top/rack-mount), mm	140x110x35 / 480x105x44
Weight (table-top / rack-mount), kg	0.35 / 0.85
Power supply	220V +- 20% / 5 W
Temperature operational range	+0°C to +70°C
E1 interface	
Type of the connector	RJ45, 8 pins
Type of the line	Symmetrical twisted pair, 120 Ohm
Pulse rated voltage	3 V +- 10%
Data transfer rate	2048 kbit/s +- 50 ppm
Stuffing synchronization	AMI/HDB3
Signal attenuation, no more than, (E1a)	-40 dB
Signal attenuation, no more than, (E1b)	-6 dB
Conformance to standards	ITU-T G.703, G.704, G.706, G.732, G.823
Ethernet	
Type of the connector	RJ45, 8 pins
Type of the line	Symmetrical twisted pair (UTP)
Data transfer rate, Mbit/s	10/100
Conformance to standards	IEEE 802.3
Operation modes	Duplex, half duplex, autonegotiation

Delivery Kit

- ELF2-AE
- CD with a User Manual
- Console cable
- Warranty certificate
- Package box
- Power supply unit



Warranty Policy

Free repair or replacement of the device during 2 years from the date of purchase.

Supplier

"Parabel" LLC

www.parabel.ru, phone/fax number +7 383 213 87 07, Email: sales[AT]parabel.ru